

67F/5-29 Wandella Road Miranda, NSW

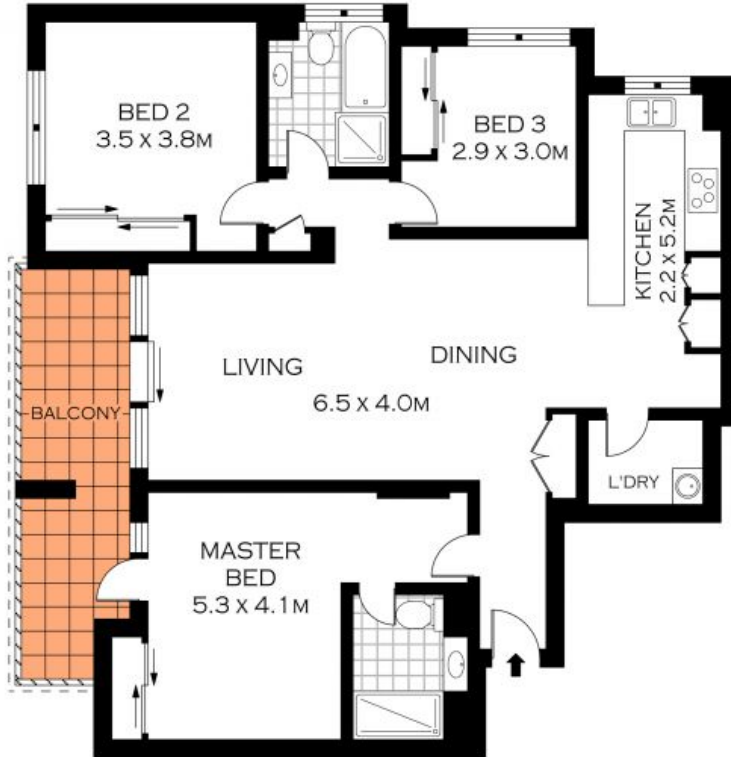


City Views

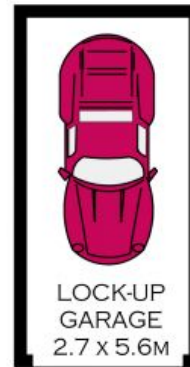
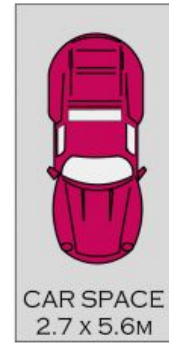
- City skyline and Bay views from a peaceful covered balcony
- Fresh neutral interiors with new paint and carpet throughout
- Open plan living and dining zones with floor to ceiling glass sliding doors

- Kitchen with stone bench tops, steel appliances and ample storage space
- Master bedroom with reading area, neat ensuite and balcony access
- Well-proportioned bedrooms with built-in robes and leafy outlooks
- Internal laundry with scope for additional home storage
- Secure lift access, and both a lock up garage and a parking space
- Complex includes an outdoor pool, cabana/BBQ area and a heated indoor pool with sauna.
- Just a 700m walk to Westfield Miranda's great restaurants, cafes and shopping

Price: \$670000



ELEVENTH LEVEL



INT : 102.10M²



PLANS SHOWN ONLY INDICATIVE OF LAYOUT. DIMENSIONS ARE APPROXIMATE
 Floor plans by www.remaustralia.com
 Ref No: 11624

67F / 5-29 WANDELLA ROAD

MIRANDA