



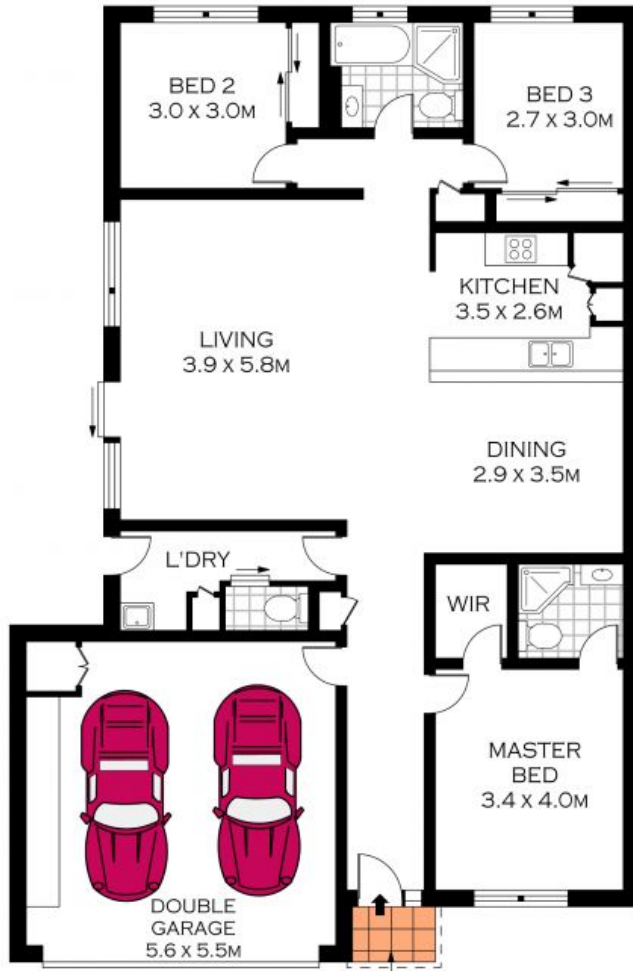
1/18A Hood Street Miranda, NSW



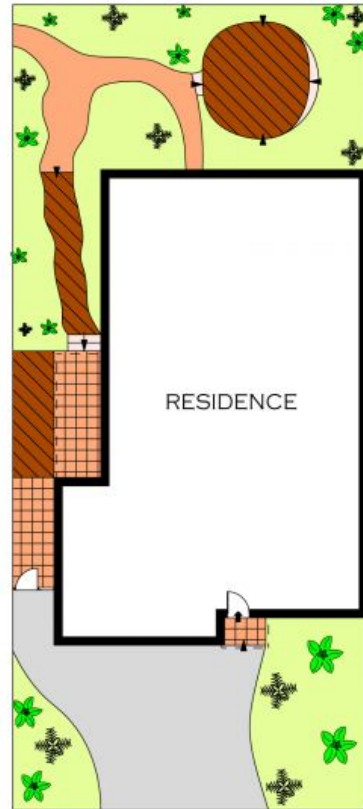
Spacious Duplex

- Impressive facade with beautifully maintained landscaped gardens
- Great condition with a chic, neutral colour palette throughout
- Open plan living room and dining flowing onto a peaceful courtyard
- Gas kitchen granite benches, Smeg appliances and ample storage space
- Generous bedrooms with built-in wardrobes and peaceful, leafy views
- Large master bedroom with walk in robe and immaculate ensuite
- Large and immaculate main bathroom with separate bath and shower
- Tranquil Japanese garden with separate spacious entertaining deck
- Security alarm system, large laundry, air conditioning and oversized windows
- Double garage with internal access, workshop benches and ample storage

Price: \$1275000



GROUND FLOOR



SITE PLAN
(NOT TO SCALE)

INT : 156.12M²



PLANS SHOWN ONLY INDICATIVE OF LAYOUT. DIMENSIONS ARE APPROXIMATE
Floor plans by www.remaustralia.com
Ref. No: 11759

1 / 18 HOOD STREET

MIRANDA