



10/6-14 Park St Sutherland, NSW

 2  1  1

## Ground-Floor Entertainer

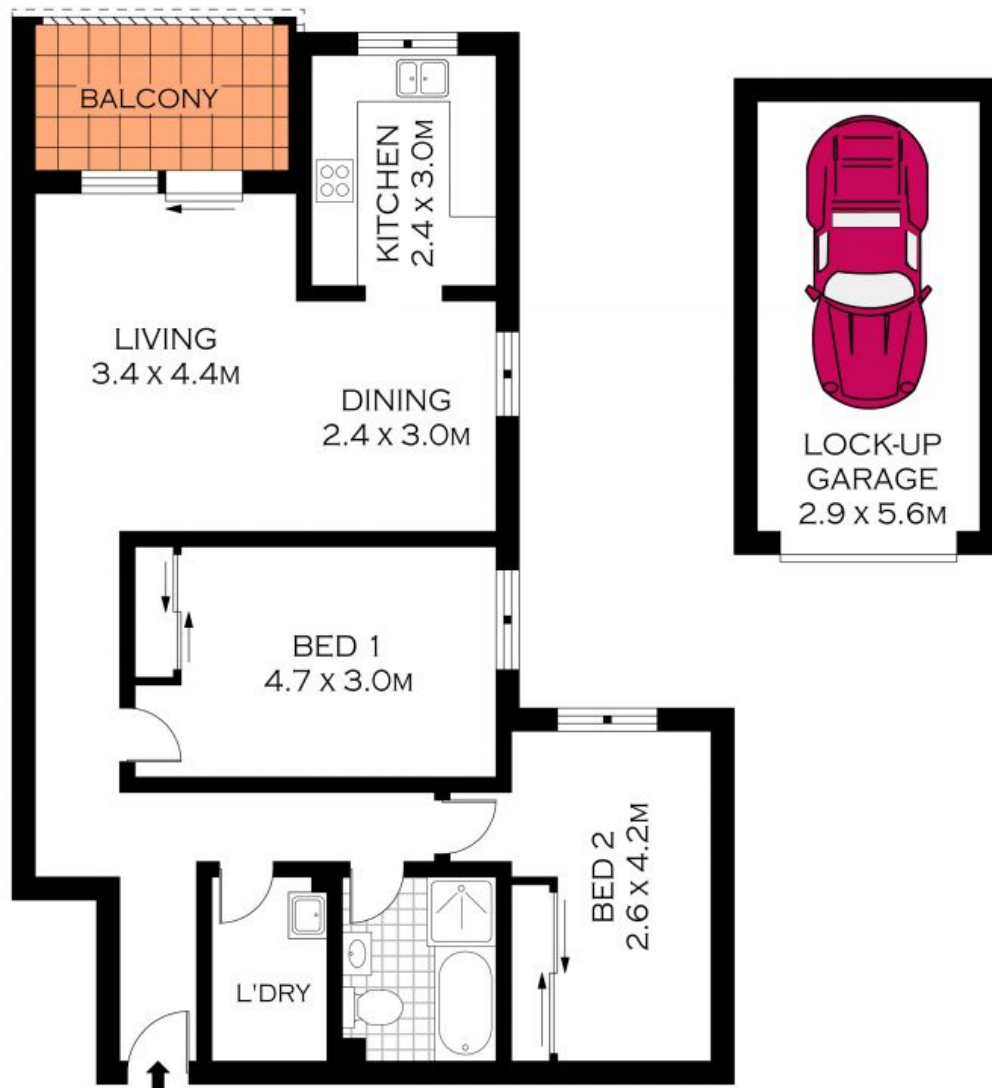
- Convenient ground floor position, with a quiet rear block position
- New carpet, fresh paint, new LED lighting and plantation shutters throughout
- Open-plan living and dining room flowing onto a peaceful balcony
- Kitchen with granite bench tops, steel appliances and ample storage.
- Generous master bedroom with built-in wardrobe and leafy views
- Large second bedroom with built-in wardrobe and private aspect
- Large and immaculate main bathroom with separate bath and shower
- Internal laundry with ample storage, air conditioning and LED lighting
- Covered balcony with garden views, perfect for BBQ and alfresco dining
- Single lock-up garage with convenient lift access from garage to apartment

**Price:** \$602500

**Harwood**  
PROPERTY AGENTS

**Lucas Harwood**

0431 001 001



INT : 84SQM (APPROX)  
GARAGE : 17SQM  
TOTAL SIZE : 101SQM (APPROX)



PLANS SHOWN ONLY INDICATIVE OF LAYOUT. DIMENSIONS ARE APPROXIMATE.  
Floor plans by [www.remaustralia.com](http://www.remaustralia.com)  
Ref. No: 11758

**Harwood**  
PROPERTY AGENTS

10/6-14 PARK STREET

SUTHERLAND

10/6-14 Park St

Sutherland, NSW

**Harwood**  
PROPERTY AGENTS