



1/40-42 Yathong Road Caringbah, NSW



3



1

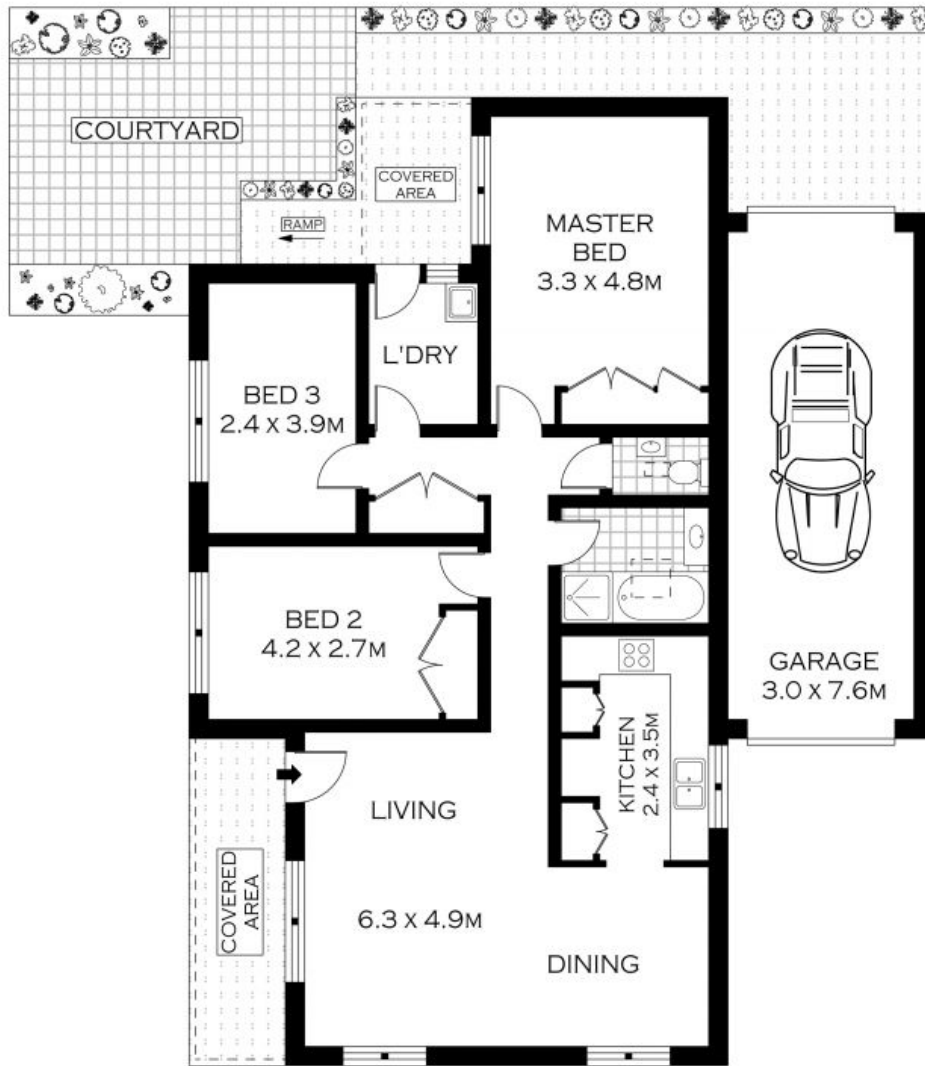


1

Convenient Lifestyle

- Large light-filled, open-plan living and dining space
- Spacious kitchen with ample bench and storage space
- Three generous bedrooms, two with built-in wardrobes
- Immaculate bathroom with separate bath and shower
- Fresh paint, laundry, high ceilings and ducted air conditioning
- Paved courtyard with leafy views and a north-facing aspect
- Well-maintained over 55s complex with tidy landscaped gardens
- Large drive-through garage, and no common walls shared

Price: \$825000



GROUND FLOOR

INT : 94.01M² 



PLANS SHOWN ONLY INDICATIVE OF LAYOUT. DIMENSIONS ARE APPROXIMATE.
Floor plans by www.remaustralia.com
Ref. No. 11622

1/40-42 YATHONG ROAD

CARINGBAH

1/40-42 Yathong Road

Caringbah, NSW