

22/63-69 President Avenue Caringbah, NSW



2



1

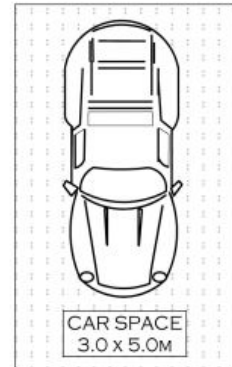
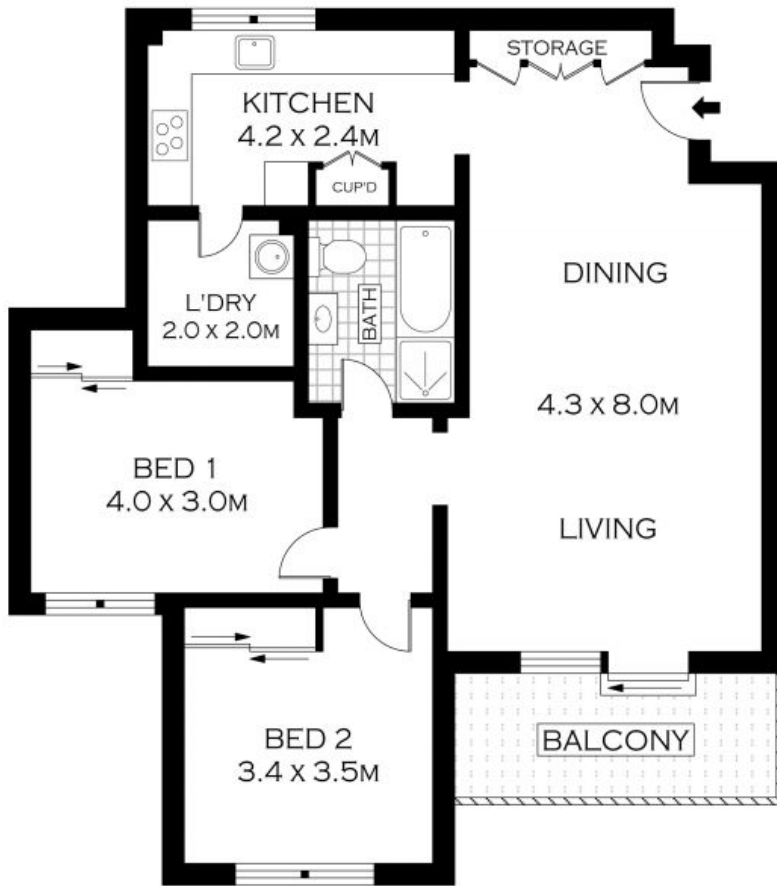


1

## Great Location

- Just 600m (approx) to Caringbah train station, 150m (approx) to Coles and Woolworths supermarkets
- Spacious open-plan layout with plenty of space for living and dining zones
- Immaculate kitchen with ample bench and storage space
- Very generous bedrooms with built-in wardrobes and leafy views
- Large bathroom with separate bath and shower
- High ceilings, clever layout, generous laundry and ample cupboard space for storage
- Well-maintained security block with intercom access
- Internal access to car space, storage cage and ample off-street parking
- Perfect investment opportunity in a lucrative suburb or ideal low maintenance lifestyle option

**Price:** \$590000



FIRST FLOOR

INT : 91.00M<sup>2</sup>



PLANS SHOWN ONLY INDICATIVE OF LAYOUT. DIMENSIONS ARE APPROXIMATE.  
Floor plans by [www.remaustralia.com](http://www.remaustralia.com)  
Ref. No: 11564

**Harwood**  
PROPERTY AGENTS

22/63-69 PRESIDENT AVENUE

CARINGBAH

22/63-69 President Avenue

Caringbah, NSW

**Harwood**  
PROPERTY AGENTS