



12/52-56 Manchester Road Gymea, NSW



3



2



2

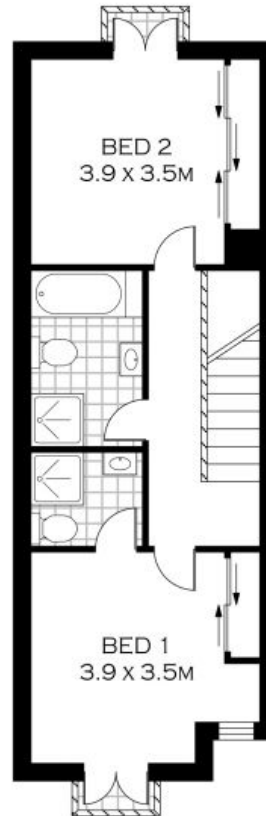
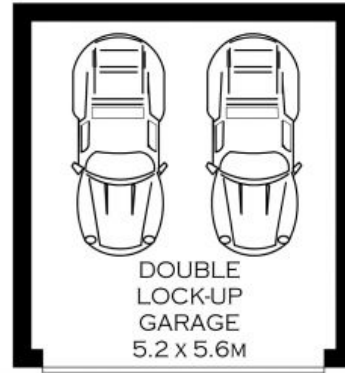
## Stylish Townhouse

- Bright open-plan layout with versatile and spacious living space
- Gas kitchen with Caesarstone benchtops, steel appliances and ample storage
- Generous light-filled master bedroom with ensuite and built-in wardrobe
- Additional bedrooms are well-proportioned with leafy views
- Designer main bathroom with both bath and shower and laundry with w/c
- High ceilings, modern flooring, plantation shutters and ducted a/c
- Large entertainer's courtyard, perfect for family gatherings
- Garden complex, with common lawn area directly in front of number 12
- Double lock-up garage with shelving and visitor parking spaces

**Price:** \$926000



GROUND FLOOR



FIRST FLOOR

INT : 91.99M<sup>2</sup>



PLANS SHOWN ONLY INDICATIVE OF LAYOUT. DIMENSIONS ARE APPROXIMATE.  
Floor plans by [www.remaustralia.com](http://www.remaustralia.com)  
Ref. No: 11483

12/52-56 MANCHESTER ROAD

GYMEA