



67 Waratah Road Engadine, NSW



4



2



2

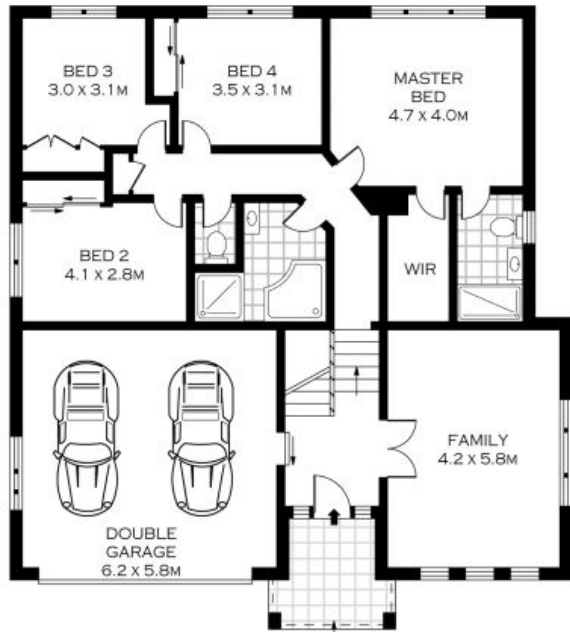
Spacious Escape

- Open-plan, split level design showcases tranquillity and ambiance
- Multiple light-filled living areas, perfect for privacy and space
- Stylish kitchen with stone bench tops and stainless steel appliances
- Spacious living room with separate dining and kitchen zones
- Covered entertainer's deck with pool/spa, yard and landscaped gardens
- Large master bedroom with walk-in wardrobe and ensuite
- Generous bedrooms with built-in wardrobes and leafy views
- Easy-care tiles, high ceilings, oversized windows and garage with internal access

Price: \$1375000



GROUND FLOOR



RAISED GROUND FLOOR

INT : 247.41M²



0 1 2 3 4 5 SCALE (METRES)

PLANS SHOWN ONLY INDICATIVE OF LAYOUT. DIMENSIONS ARE APPROXIMATE.
Floor plans by www.remsaustralia.com
Ref. No: 11367

67 WARATAH ROAD

ENGADINE

67 Waratah Road

Engadine, NSW