



13/108 Kiora Road Miranda, NSW



1



1

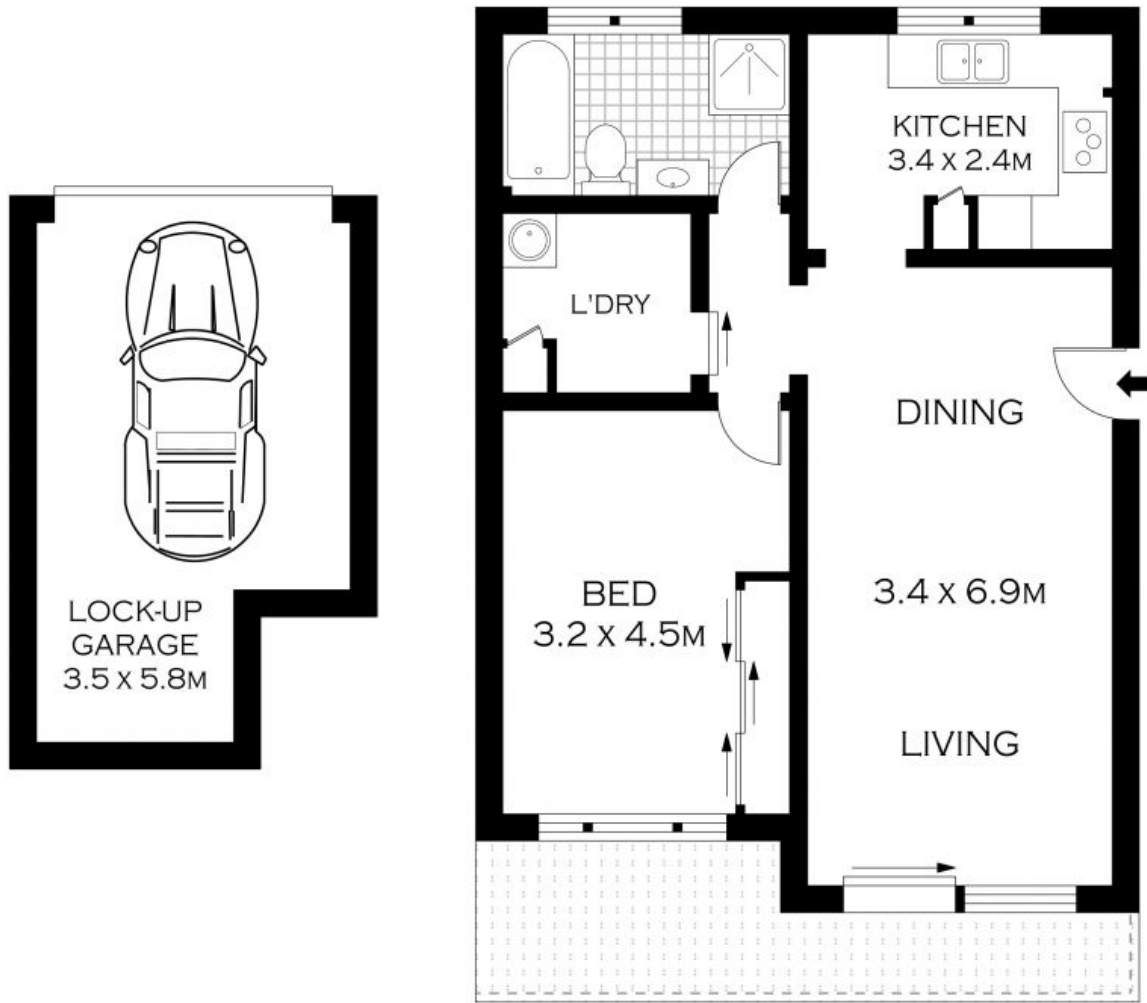


1


## Leafy Outlooks

- Light filled interiors include open plan living and dining space
- Well-proportioned kitchen with ample bench and storage space
- Generous bedroom with built-in wardrobes and leafy garden views
- Tasteful and immaculate bathroom with both bath and shower
- Large internal laundry with scope for additional storage space
- Indoor/outdoor flow with living zone leading onto a garden courtyard
- Secure car space with extra room for storage, if required and visitor parking
- Perfect opportunity for investors, downsizers, or first property buyers.

**Price:** \$530000



**GROUND FLOOR**

INT : 61.88M<sup>2</sup> 



PLANS SHOWN ONLY INDICATIVE OF LAYOUT. DIMENSIONS ARE APPROXIMATE.  
Floor plans by [www.remaustralia.com](http://www.remaustralia.com)  
Ref. No. 11135

13/108 KIORA ROAD

MIRANDA