



255 Sylvania Road South GYMEA BAY, NSW



5



3



2

## Family Entertainer

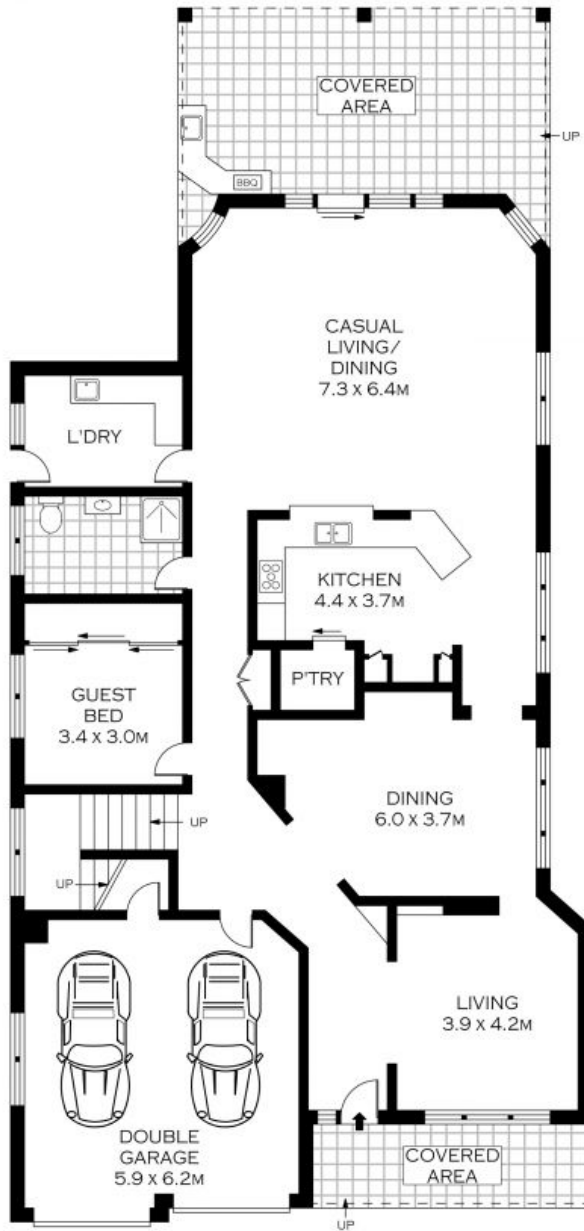
- Spacious open-plan design with multiple living zones and quality finishes
- Entrance incorporates an elegant formal lounge room adjacent to formal dining
- Kitchen with stone benchtops, steel appliances and ample storage space
- Second family living and dining zones flow on from the kitchen
- All generous bedrooms with built-in wardrobes and light, leafy views
- Grand master bedroom with ensuite, walk in wardrobe and peaceful views
- Upstairs family room/rumpus provides the perfect retreat for a growing family
- Fresh paint, brand new carpet, ducted air, ducted vacuum system and LED lighting
- Covered alfresco dining area with outdoor kitchen, perfect for entertaining

**Price:** \$2270000

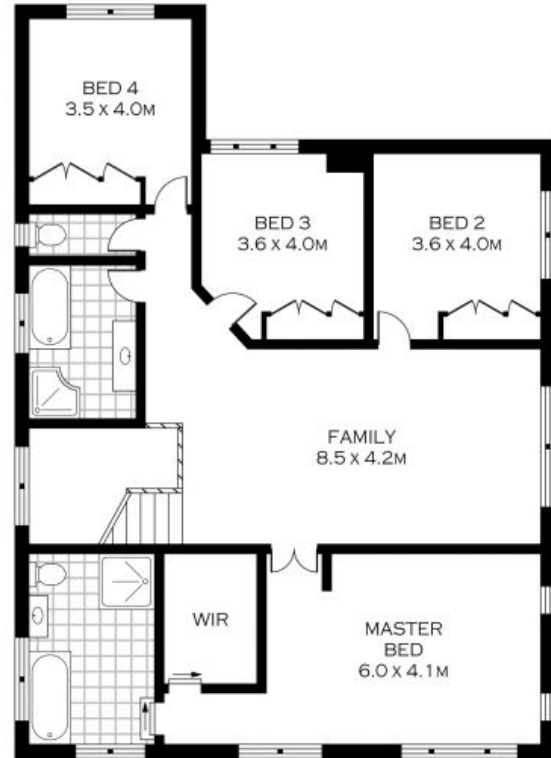
**Harwood**  
PROPERTY AGENTS

**Lucas Harwood**

0431 001 001



GROUND FLOOR



FIRST FLOOR

INT : 364.65M<sup>2</sup>



PLANS SHOWN ONLY INDICATIVE OF LAYOUT. DIMENSIONS ARE APPROXIMATE.  
Floor plans by www.remaustralia.com  
Ref. No: 11265

255 SYLVANIA ROAD

GYMEA

255 Sylvania Road South

GYMEA BAY, NSW