



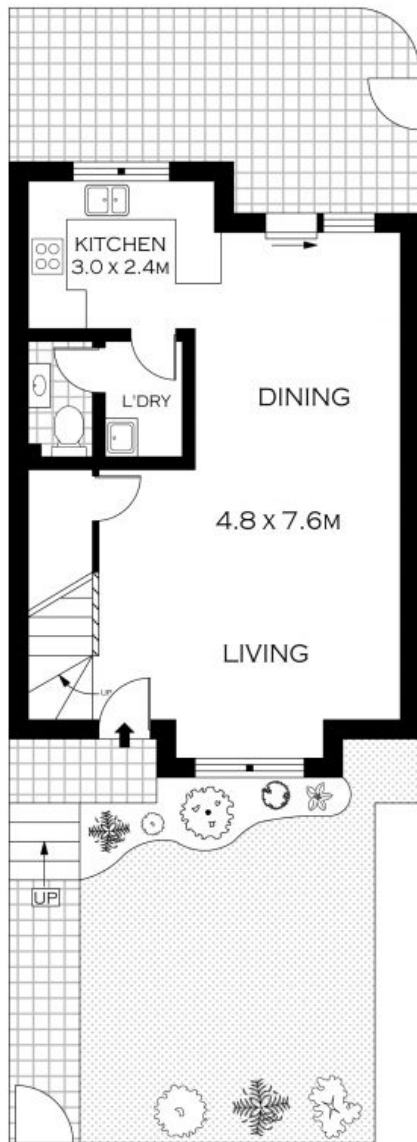
3/236 The Boulevard Miranda, NSW



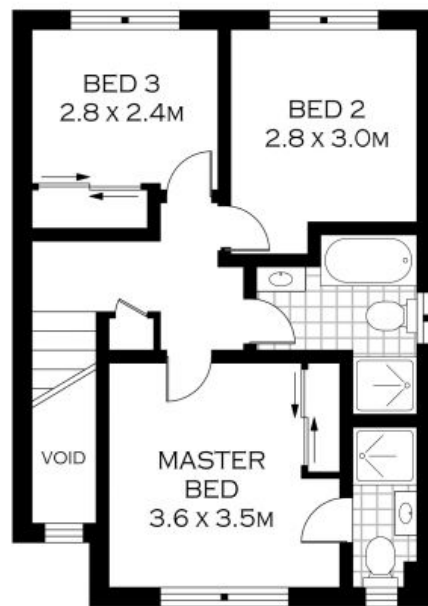
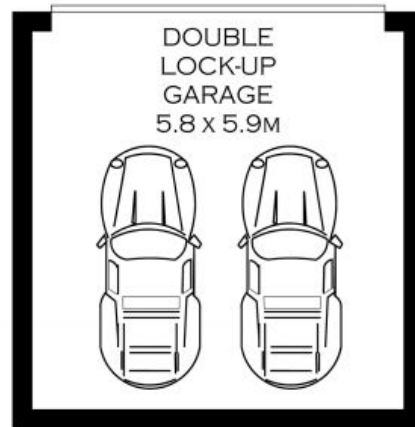
Spacious Retreat

- Generous layout features separate lounge and dining zones
- Indoor/outdoor flow with courtyard adjacent to dining room
- Kitchen with stone bench tops and stainless steel appliances
- Lounge room transitions out onto a quiet and peaceful garden
- Master bedroom with ensuite and mirrored built-in wardrobes
- Generous bedrooms, two of three with built-in wardrobes
- Spacious full bathroom with separate bath and shower
- Internal laundry adjacent to additional wash closet
- Fresh paint, brand new carpet and neutral colour scheme throughout

Price: \$795000



GROUND FLOOR



FIRST FLOOR

INT : 98.78M²



PLANS SHOWN ONLY INDICATIVE OF LAYOUT. DIMENSIONS ARE APPROXIMATE.
Floor plans by www.remaustralia.com
Ref. No: 11130

3/236 THE BOULEVARDE

MIRANDA