



25 Dalley Road Heathcote, NSW



4



2



3

Summer Entertainer

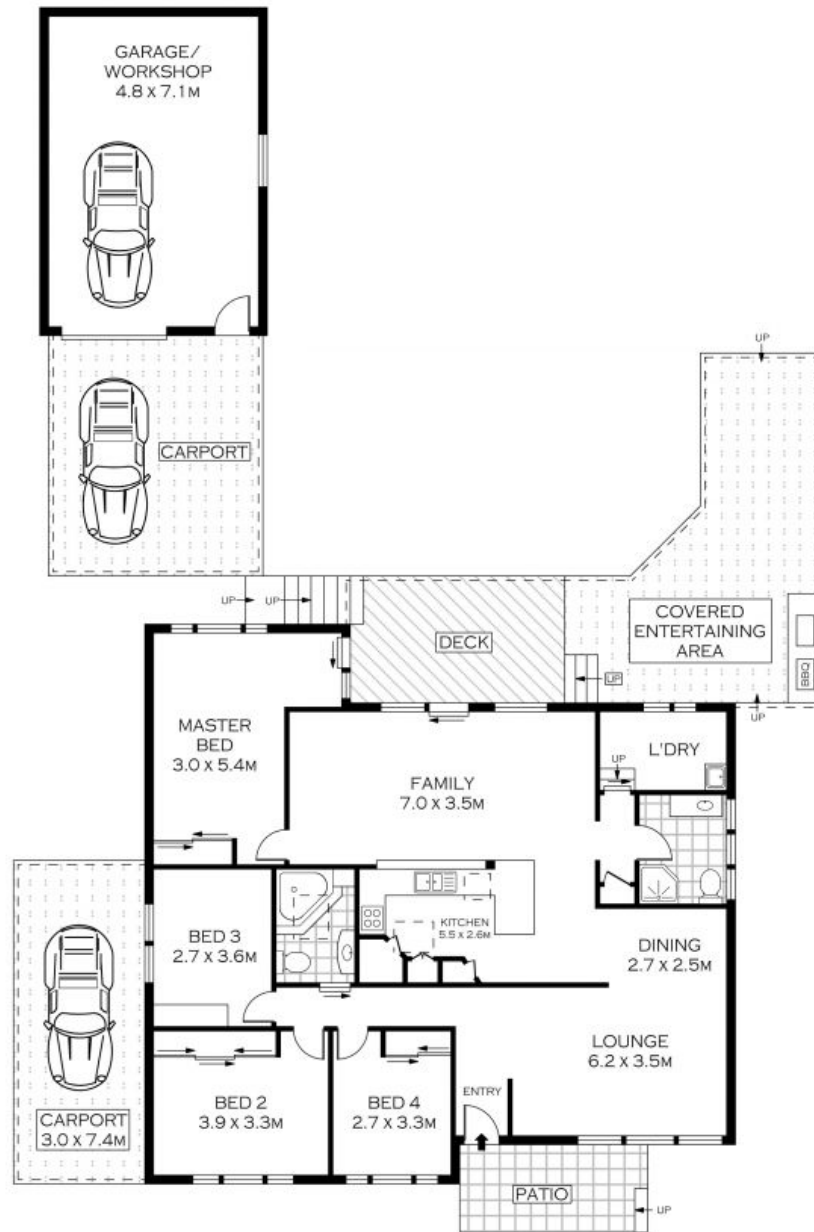
- Open-plan layout provides multiple light-filled living areas
- Separate dining space adjacent to formal living area
- Kitchen with breakfast bar and ample bench and storage space
- Light and airy bedrooms all featuring built-in wardrobes
- Generous, light-filled master bedroom with leafy outlooks
- Timber floorboards, high ceilings and oversized windows throughout
- Sliding glass doors open onto expansive entertainer's deck
- Level north-facing backyard adjacent to stylish solar heated in-ground pool
- Paved alfresco dining area complete with built-in BBQ
- Garage with workshop, two carports, ample off-street parking plus storage

Price: \$1073500

Harwood
PROPERTY AGENTS

Lucas Harwood

0431 001 001



GROUND FLOOR

INT : 140.93M²



PLANS SHOWN ONLY INDICATIVE OF LAYOUT. DIMENSIONS ARE APPROXIMATE.
Floor plans by www.remaustralia.com
Ref. No: 11003

Harwood
PROPERTY AGENTS

25 DALLEY ROAD

HEATHCOTE

25 Dalley Road

Heathcote, NSW

Harwood
PROPERTY AGENTS