



9 Betham Place Kirrawee, NSW



4



3



1

Dual Living

- Two levels each offering separate entrances and private self-contained living
- Lower level provides multiple living areas, two bathrooms & three bedrooms
- Upper level living offers a bedroom, bathroom, kitchen and leafy balcony views
- Both kitchens showcase brand new ovens and cooktops and ample storage
- All bedrooms contain built-in robes and enjoy picturesque bushland views
- Two of three bathrooms are brand new, lower level ensuite features walk-in shower
- Outdoor area includes covered gazebo, pizza oven and pool with new decking

Price: \$1330000

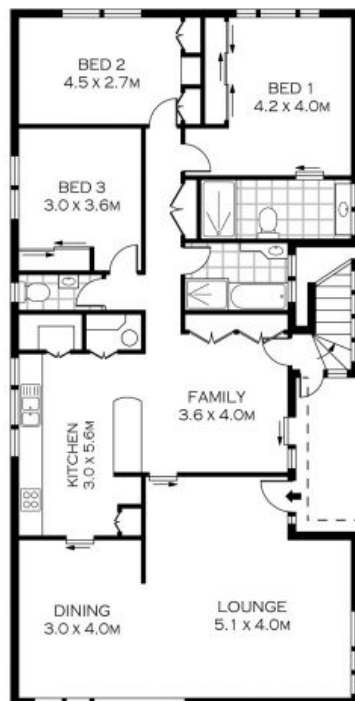
Harwood
PROPERTY AGENTS

Lucas Harwood

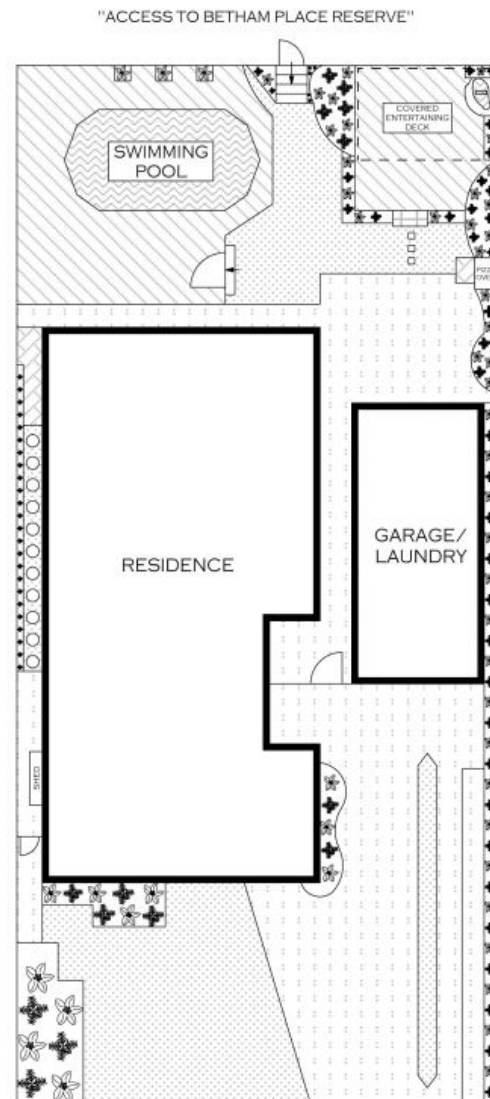
0431 001 001



UPPER LEVEL



ENTRY LEVEL



SITE PLAN
(NOT TO SCALE)

INT : 199.17M²



PLANS SHOWN ONLY INDICATIVE OF LAYOUT. DIMENSIONS ARE APPROXIMATE.
Floor plans by www.remaustralia.com
Ref. No: 10778