



29D/5-29 Wandella Road Miranda, NSW



2



1

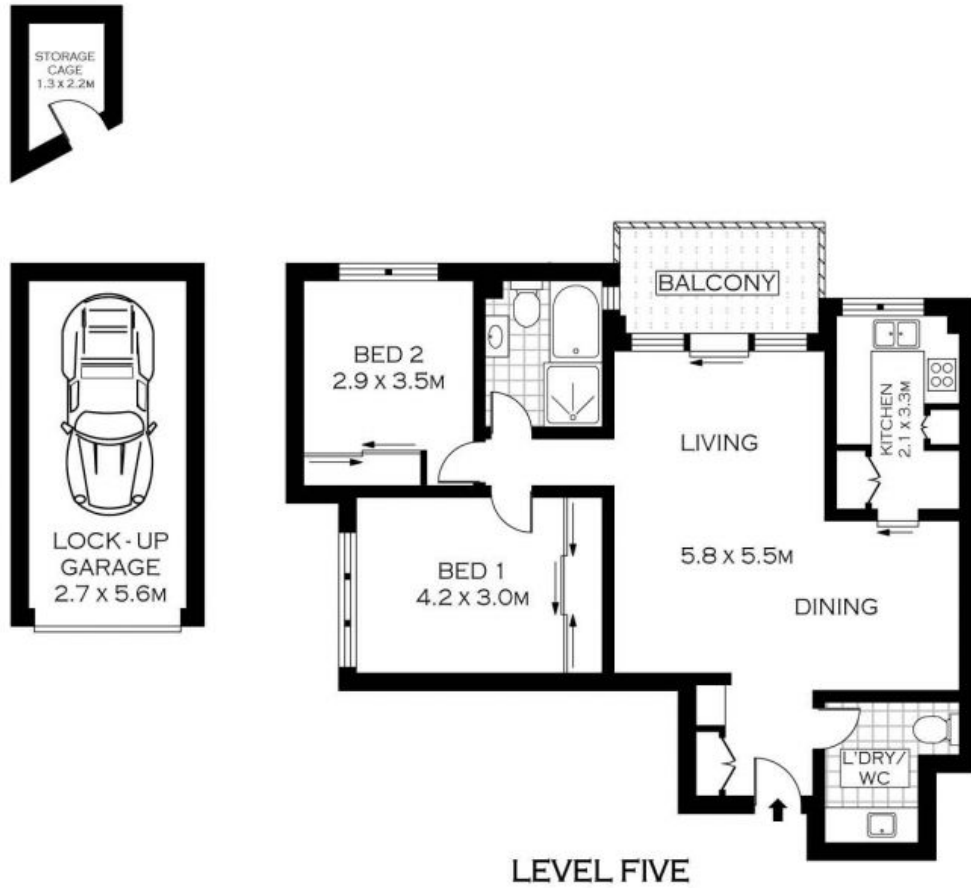


1

Cityscape Views

- Spacious open-plan layout with separate living and dining areas
- Spotless galley style kitchen with ample storage and bench area.
- Large bedrooms both featuring built-in robes and quiet leafy views
- Sunny north-facing balcony with stunning panoramic city and bay views
- Updated bathroom, new flooring and internal laundry with second w/c
- Single lock up garage, separate storage and convenient lift access
- Ample residential parking provided on the ground level entrance
- Tranquil heated indoor pool and expansive outdoor pool
- Moments from Seymour Shaw Park, playgrounds, tennis and netball courts

Price: \$552000



INT : 76.31M²



PLANS SHOWN ONLY INDICATIVE OF LAYOUT. DIMENSIONS ARE APPROXIMATE.
Floor plans by www.remaustralia.com
Ref. No: 10741

29D/5-29 WANDELLA ROAD

MIRANDA