

2/694 Kingsway Gymea, NSW



2



2



2

Renovated Luxury

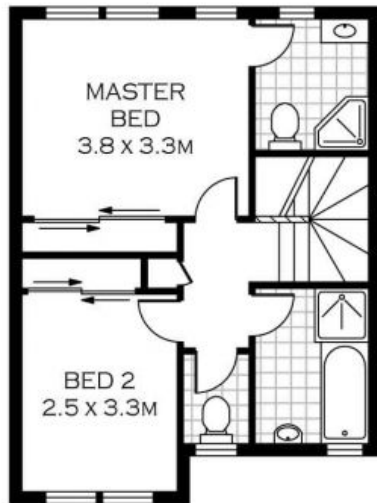
- Interiors seamlessly extend to a landscaped alfresco area
- Stone kitchen has steel gas appliances and soft close drawers
- Double bedrooms with built-ins, main with ensuite
- Full sized main bathroom, internal laundry with guest w/c
- Home office, air conditioning, bamboo floors, gas heating
- Double lock up garage with internal access, ample storage
- Readymade lifestyle base or growing investment opportunity

Price: \$852000

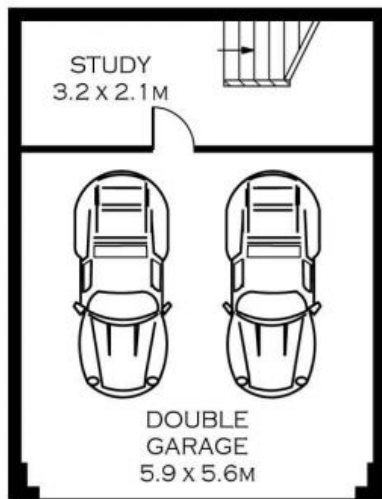
Harwood
PROPERTY AGENTS

Lucas Harwood

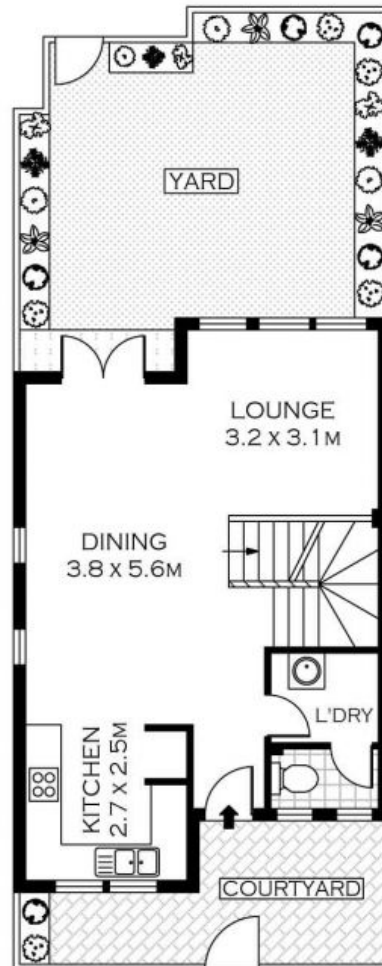
0431 001 001



UPPER LEVEL



GARAGE LEVEL



GROUND LEVEL

INT : 137.21M²



PLANS SHOWN ONLY INDICATIVE OF LAYOUT. DIMENSIONS ARE APPROXIMATE.
Floor plans by www.remaustralia.com
Ref. No: 10573

Harwood
PROPERTY AGENTS

2/694 KINGSWAY

GYMEA

2/694 Kingsway

GyMEA, NSW

Harwood
PROPERTY AGENTS