



4 Memmang Place Kirrawee, NSW



Elegant Retreat

- Free flowing layout offers abundant natural light and space
- Horizontal ribbon windows showcased in open plan living/dining
- Elegant kitchen with ample storage space and sunny outlook
- Carpeted bedrooms, all containing built-in wardrobes
- Modern bathroom complete with contemporary appointments
- Brand new timber flooring and split system air conditioning
- Rear deck and stunning all-weather alfresco entertaining space
- Lower level features home office, storage space, workshop and lock up garage
- Moments from Kareela oval, and a short stroll to local cafes, amenities and transport options

Price: \$1105500

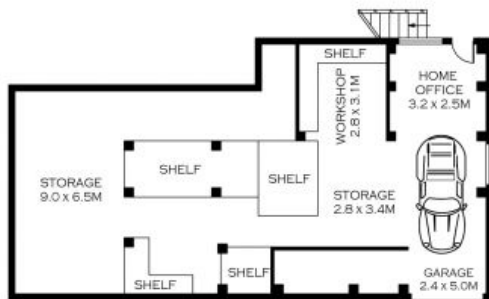
Harwood
PROPERTY AGENTS

Lucas Harwood

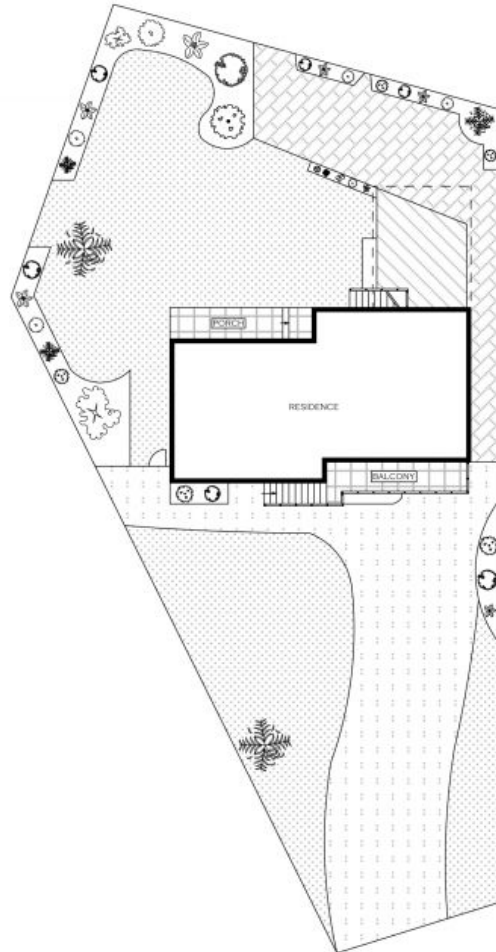
0431 001 001



GROUND FLOOR



LOWER GROUND FLOOR



SITE PLAN

INT : 203.85M²



SCALE (METRES)

PLANS SHOWN ONLY INDICATIVE OF LAYOUT. DIMENSIONS ARE APPROXIMATE.
Floor plans by www.remaustralia.com
Ref. No: 10374