



4 Memmang Place Kirrawee, NSW



3



1



1

## Elegant Retreat

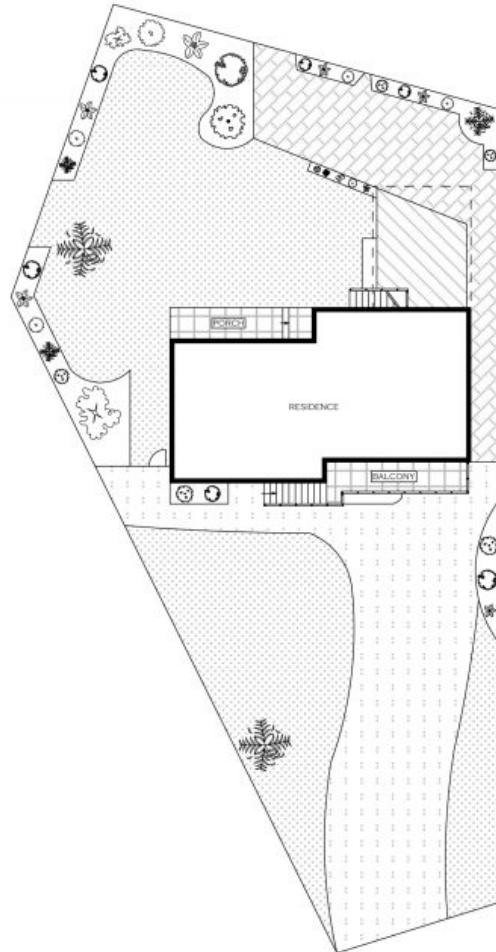
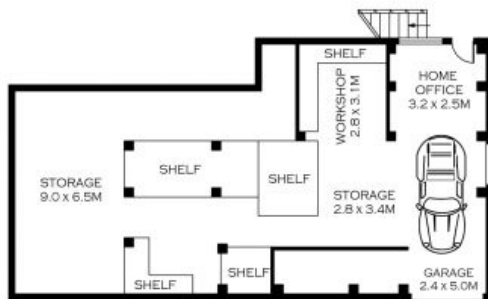
- Free flowing layout offers abundant natural light and space
- Horizontal ribbon windows showcased in open plan living/dining
- Elegant kitchen with ample storage space and sunny outlook
- Carpeted bedrooms, all containing built-in wardrobes
- Modern bathroom complete with contemporary appointments
- Brand new timber flooring and split system air conditioning
- Rear deck and stunning all-weather alfresco entertaining space
- Lower level features home office, storage space, workshop and lock up garage
- Moments from Kareela oval, and a short stroll to local cafes, amenities and transport options

**Price:** \$1105500

**Harwood**  
PROPERTY AGENTS

**Lucas Harwood**

0431 001 001



INT : 203.85M<sup>2</sup>



SCALE (METRES)

PLANS SHOWN ONLY INDICATIVE OF LAYOUT. DIMENSIONS ARE APPROXIMATE.  
Floor plans by [www.remaustralia.com](http://www.remaustralia.com)  
Ref. No: 10374

**Harwood**  
PROPERTY AGENTS

4 MEMMANG PLACE

KIRRAWEE

4 Memmang Place

Kirrawee, NSW

**Harwood**  
PROPERTY AGENTS