

NSW 1/118 Glencoe Street Sutherland SUTHERLAND,

 3  2  1

Stylish Living

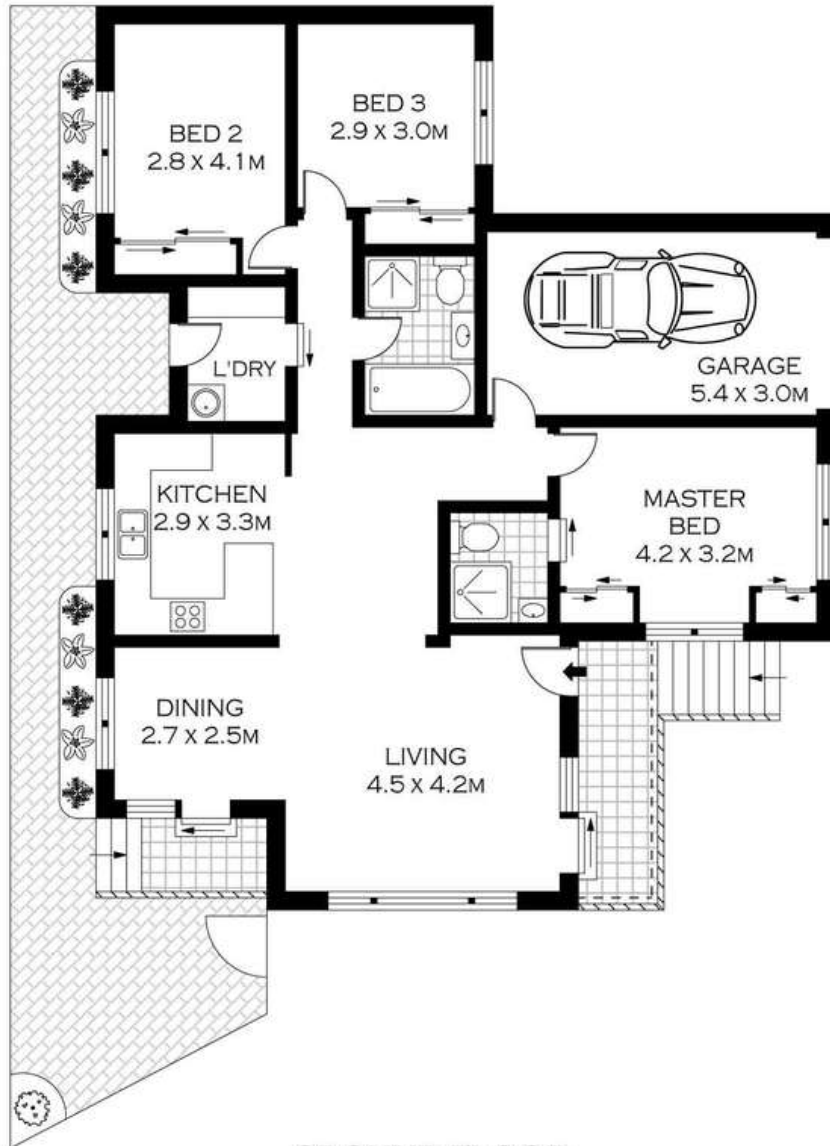
- Open-plan living and dining flows out onto a low maintenance courtyard?
- Three bedrooms with built-in robes, master with ensuite?
- Large modern kitchen with quality finishes and ample storage
- Generous full-sized bathroom with separate bath and shower
- Bamboo timber floors, air conditioning and new carpet
- Lock-up garage with internal access ?
- Moments to Sutherland's restaurants, shopping, schools and transport options
- This property could provide an ideal home, investment or downsize opportunity

Price: \$600

Harwood
PROPERTY AGENTS

Lucas Harwood

0431 001 001



GROUND FLOOR

INT : 118.46M²



PLANS SHOWN ONLY INDICATIVE OF LAYOUT. DIMENSIONS ARE APPROXIMATE.
Floor plans by www.remaustralia.com
Ref. No. 10141

1/118 GLENCOE STREET

SUTHERLAND

1/118 Glencoe Street Sutherland SUTHERLAND, NSW