

1/118 Glencoe Street Sutherland, NSW



3



2

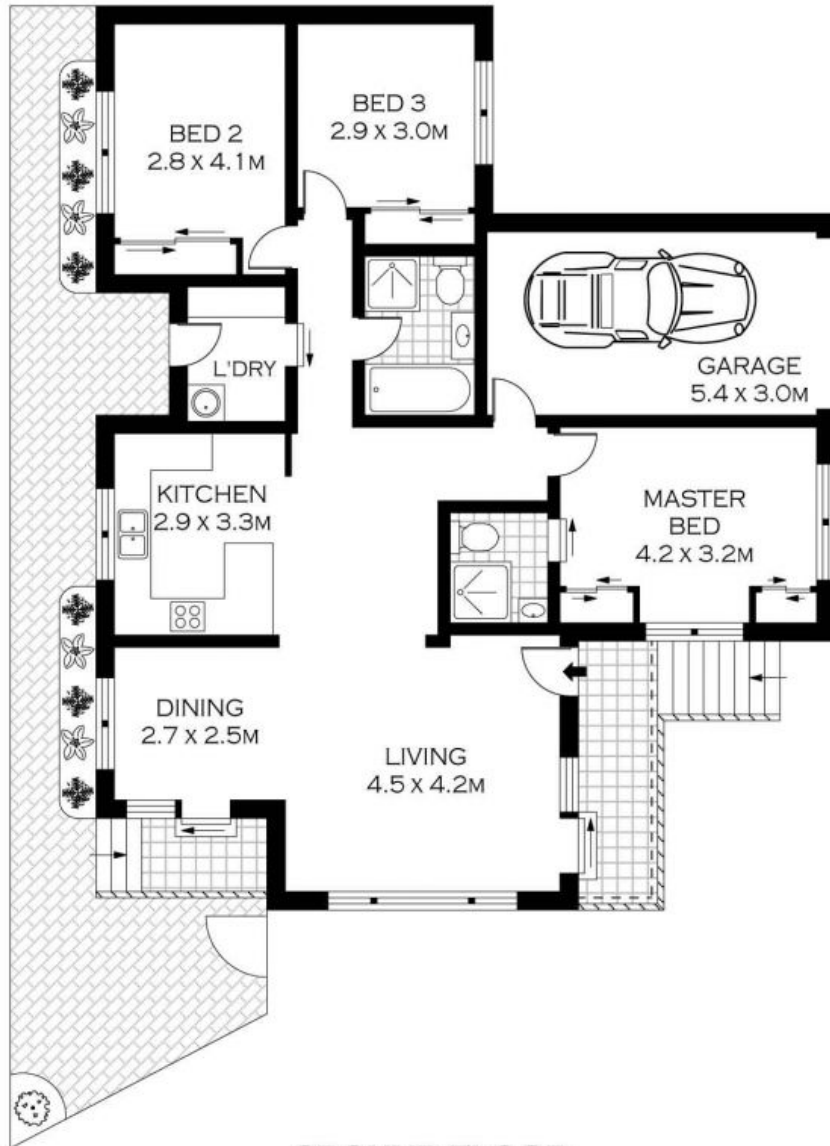


1

## Stylish Living

- Open-plan living and dining flows out onto a low maintenance courtyard?
- Three bedrooms with built-in robes, master with ensuite?
- Large modern kitchen with quality finishes and ample storage
- Generous full-sized bathroom with separate bath and shower
- Bamboo timber floors, air conditioning and new carpet
- Lock-up garage with internal access ?
- Moments to Sutherland's restaurants, shopping, schools and transport options
- This property could provide an ideal home, investment or downsize opportunity

**Price:** \$690000



GROUND FLOOR

INT : 118.46M<sup>2</sup>



PLANS SHOWN ONLY INDICATIVE OF LAYOUT. DIMENSIONS ARE APPROXIMATE.  
Floor plans by [www.remaustralia.com](http://www.remaustralia.com)  
Ref. No: 10141

1/118 GLENCOE STREET

SUTHERLAND