



6 Partridge Avenue Miranda, NSW



4



3



2

## Captivating Residence

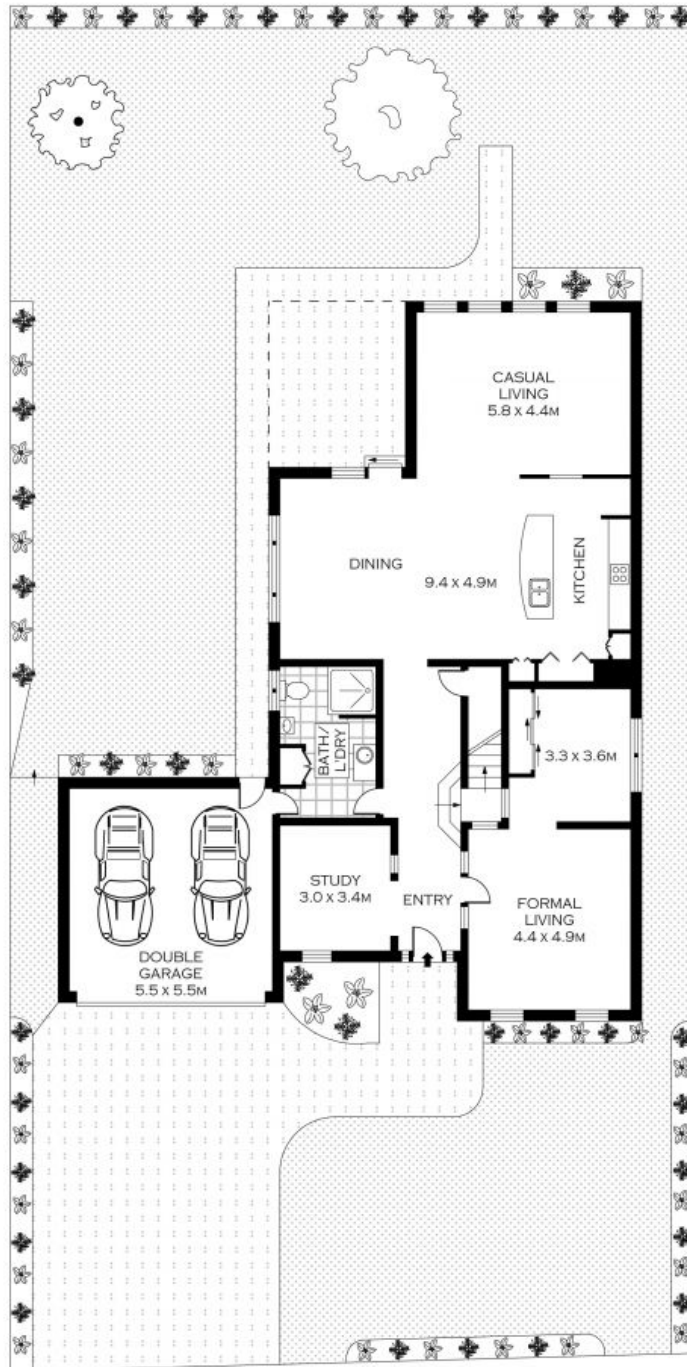
- Multiple living areas with a stylish neutral colour scheme throughout
- Open-plan kitchen with granite benchtops and stainless steel appliances
- Light-filled lounge and dining areas with leafy outlooks
- Scope for fifth bedroom or in-law accommodation on lower level
- Ducted air conditioning, solar panels and separate study
- Large upper level lounge area, built in wardrobes in all bedrooms
- Master bedroom with walk-in robe and ensuite bathroom
- Covered outdoor dining area with easy-care lawn/garden surrounds
- Double garage with internal access and ample off-street parking

**Price:** \$1540000

**Harwood**  
PROPERTY AGENTS

**Lucas Harwood**

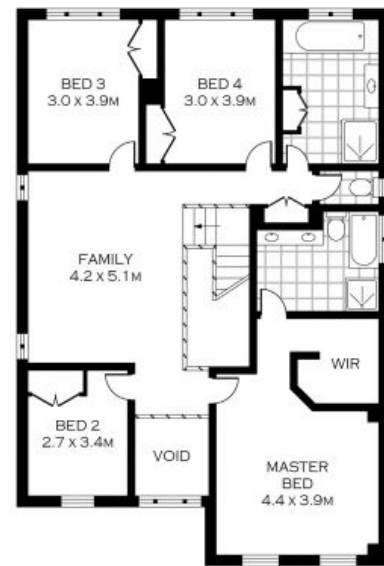
0431 001 001



GROUND FLOOR



PLANS SHOWN ONLY INDICATIVE OF LAYOUT. DIMENSIONS ARE APPROXIMATE.  
Floor plans by [www.remaustralia.com](http://www.remaustralia.com)  
Ref. No: 10037



UPPER FLOOR

INT : 315.37M<sup>2</sup>



6 PARTRIDGE AVENUE

MIRANDA

6 Partridge Avenue

Miranda, NSW