



28 Anzac Street Miranda, NSW



3



1

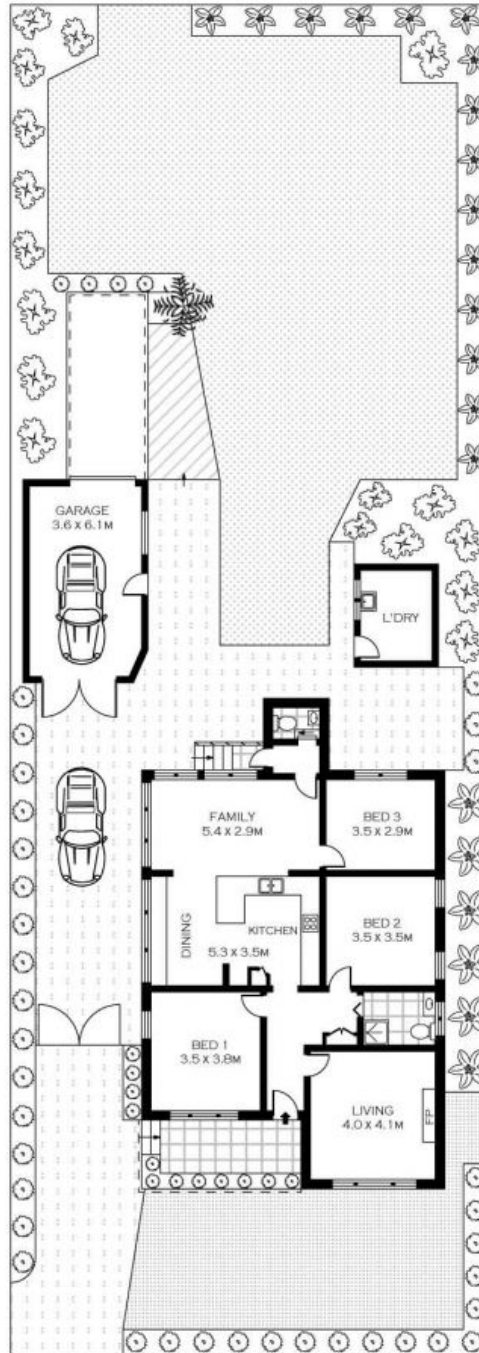


1

### Prime Location

- Classic flowing layout featuring freshly updated interiors
- Newly renovated eat-in kitchen with ample cupboard storage
- Separate lounge dining areas ideal for entertaining
- Bright and airy bathroom with second w/c
- Outdoor entertaining area with timber deck and level grassed yard
- 650sqm block with a 15.24m frontage, ideal for duplex development (STCA)
- Timber floors throughout, split system air, external laundry
- Single garage with off-street parking for a boat or multiple cars

**Price:** Auction, unless sold prior



GROUND FLOOR

INT : 109M<sup>2</sup> 



SCALE (METRES)

PLANS SHOWN ONLY INDICATIVE OF LAYOUT. DIMENSIONS ARE APPROXIMATE.  
Floor plans by [www.remaustralia.com](http://www.remaustralia.com)  
Ref. No: 9517

**Harwood**  
PROPERTY AGENTS

28 ANZAC STREET

MIRANDA

28 Anzac Street

Miranda, NSW

**Harwood**  
PROPERTY AGENTS