



1/9 Kiora Road Miranda, NSW



2



1

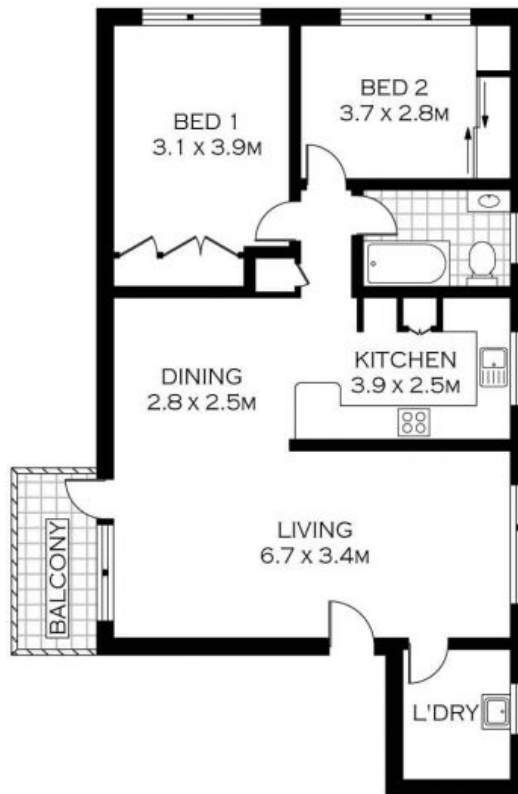
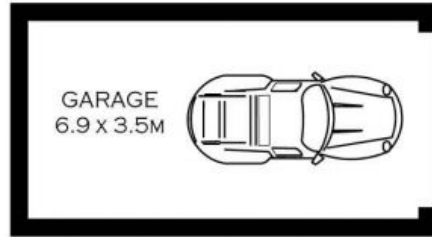


1

Easy Living

- Stylish light-filled interiors enhanced by only one common wall
- Well-designed layout featuring lounge and adjoining dining
- Sleek kitchen with brand new stainless steel appliances
- Private north facing undercover balcony, ideal for entertaining
- Double sized bedrooms with built-ins and timber shutters
- Full sized renovated bathroom with floor to ceiling tiles
- Tiled floors, ceiling fans, reverse cycle air conditioning
- Single lock up garage with auto garage door

Price: \$608000



FRIST FLOOR

INT : 80M² 



PLANS SHOWN ONLY INDICATIVE OF LAYOUT. DIMENSIONS ARE APPROXIMATE.
Floor plans by www.remaustralia.com
Ref. No: 9470