



850 Kingsway Gymea, NSW



3



1

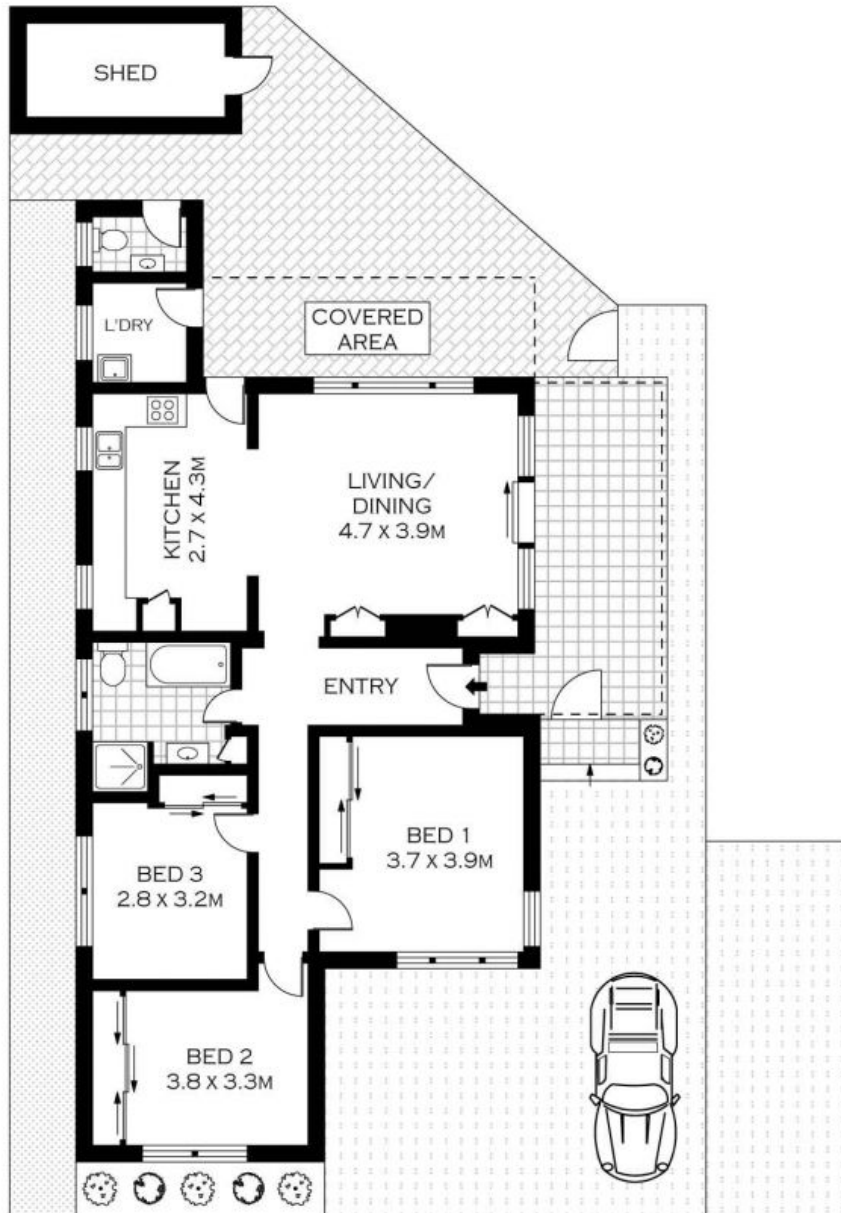


2

### Affordable Living

- Vast open plan living zones extend seamlessly to outdoor area
- Freshly upgraded interiors and low maintenance gardens
- Covered alfresco setting ideal for all year entertaining
- Spacious kitchen with floor to ceiling storage throughout
- Impressively scaled bedrooms feature mirrored built-in robes
- Immaculate full bathroom showcases contemporary fittings
- Gas bayonets, high ceilings, double brick, timber floors, shed, separate w/c
- Off street parking available plus visitor parking for multiple cars

**Price:** \$695000



INT : 90.01M<sup>2</sup>



PLANS SHOWN ONLY INDICATIVE OF LAYOUT. DIMENSIONS ARE APPROXIMATE.  
Floor plans by [www.remaustralia.com](http://www.remaustralia.com)  
Ref. No: 9336

**Harwood**  
PROPERTY AGENTS

850 KINGSWAY

GYMEA

850 Kingsway

GyMEA, NSW

**Harwood**  
PROPERTY AGENTS