



5/12-16 Jersey Avenue Mortdale, NSW



2



1

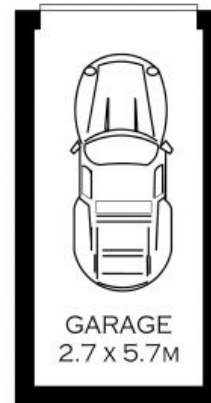
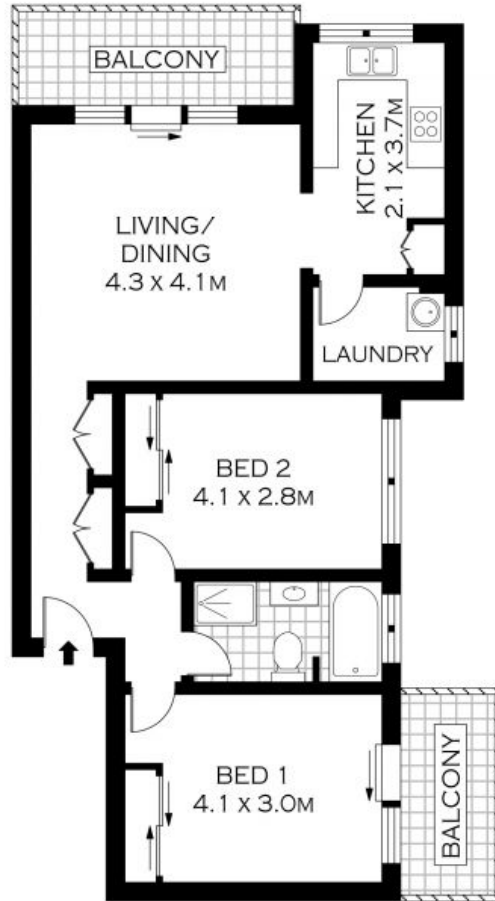


1

## Breathtaking Views

- Spacious open plan dining/living area with private undercover balcony
- Updated kitchen with peaceful outlook, stainless steel appliances
- Two generous bedrooms, each with built-ins, main with private balcony
- Thoughtful layout separates bedrooms from living space
- Full-sized renovated bathroom, with separate bath and shower
- Internal laundry, high ceilings, ceiling fans throughout
- Lock up garage plus room for storage
- Moments to shops, restaurants and transport options

**Price:** \$590000



TOP FLOOR

NOTE :- SINGLE LOCK-UP GARAGE  
INT : 68.74M<sup>2</sup>



PLANS SHOWN ONLY INDICATIVE OF LAYOUT. DIMENSIONS ARE APPROXIMATE.  
Floor plans by [www.realestatemarketingaustralia.com.au](http://www.realestatemarketingaustralia.com.au)  
Ref. No: 9048

**Harwood**  
PROPERTY AGENTS

5/12-16 JERSEY AVENUE

MORTDALE

5/12-16 Jersey Avenue

Mortdale, NSW

**Harwood**  
PROPERTY AGENTS