



850 Kingsway GyMEA, NSW



3



1



2

Affordable Living

- Vast open plan living zones extend seamlessly to outdoor area
- Freshly upgraded interiors and low maintenance gardens
- Covered alfresco setting ideal for all year entertaining
- Spacious kitchen with floor to ceiling storage throughout
- Impressively scaled bedrooms feature mirrored built-in robes
- Immaculate full bathroom showcases contemporary fittings
- Gas bayonets, high ceilings, double brick, timber floors, shed, separate w/c
- Off street parking available plus visitor parking for multiple cars

Price: \$695000

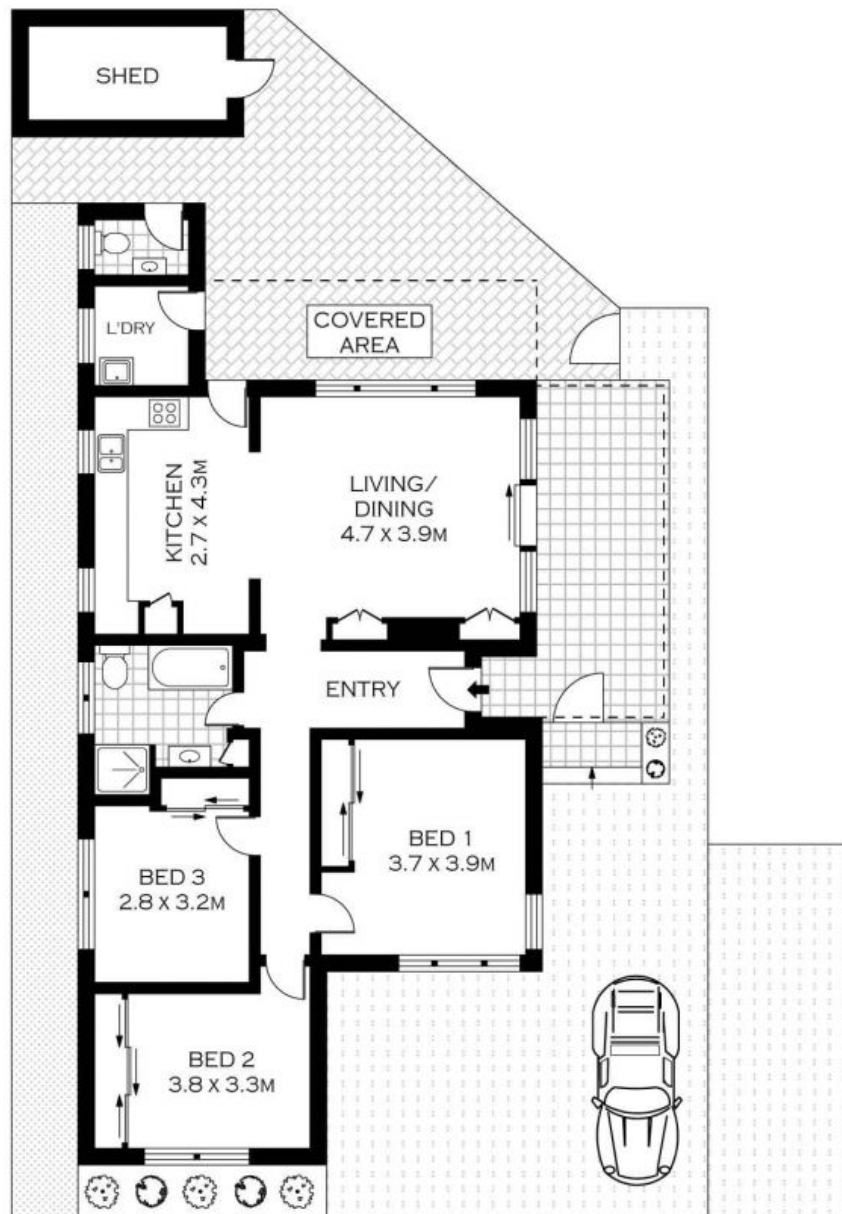
Harwood
PROPERTY AGENTS

Lucas Harwood

0431 001 001

Lucas Harwood

0431 001 001



INT : 90.01M²



PLANS SHOWN ONLY INDICATIVE OF LAYOUT. DIMENSIONS ARE APPROXIMATE.
Floor plans by www.remaustralia.com
Ref. No: 9336

Harwood
PROPERTY AGENTS

850 KINGSWAY

GYMEA

850 Kingsway

Gymea, NSW

Harwood
PROPERTY AGENTS